



CAPTAINS' MANUAL

PRESENTED BY:



Captain's Meeting on Dec. 12, 2023



**5:15 PM Registration
6:00 PM Meeting**



HOSTED BY:



Human Energy™

PARADE DATE: DECEMBER 16, 2023



WINTERFEST
BOAT PARADE



Table of Contents

• I.	Parade Preparation—Key Points.....	3
• II.	Parade Day Schedule	6
• III.	Staging Your Boat.....	8
• IV.	Route.....	10
• V.	Spacing, Tides, & Pointers.....	11
• VI.	Parade End Highlights.....	14
• VII.	Parade Filming.....	24
• VIII.	Parade Judging.....	25
• IX.	Terms & Conditions.....	26

Important Contact Information

- Kathy Keleher: 954-292-6314
Winterfest Parade Director / Control Room
- Britt Lanier: 954-410-9706
Parade Chair

Parade Preparation—Key Points

RADIO CHANNELS:

- Travelling in New River for traffic/bridges

VHF Channel 9

Staging and During Parade:

- Parade Control / Primary Participants
- Coast Guard / Emergencies
- Control Boats

VHF Channel 68

VHF Channel 16 / 22A

VHF Channel 78 / 72

IMPORTANT: Crew members monitoring VHF should wear headphones!

You must be able to hear your radio & cell phone in case Parade Control calls you.

PARADE BOATS STAGED OUT OF SEQUENCE:

- Pre-Show Entries
- *South Beach Lady*—Grand Marshal Showboat
- *Jungle Queen*—Santa Showboat

CONTROL BOATS

- These define the route. All spectator crafts must be behind them.
- Control Boats have a flashing Amber Light and an identifying Alpha Letter Sign.

PARADE TIMING

- 6 min from 3rd Ave Bridge to Stranahan House/Riverside Hotel
- 9 min to 3rd Ave from Las Olas Riverfront

NON-MOTORIZED VESSELS

- *All boats MUST have lights & alpha-letters on display!!!*
- During Parade, move to the side for motorized vessels to pass when needed.

VESSEL SPACING

- Maintain 150 ft. from the vessel you are following.

HAVE ADDITIONAL QUESTIONS?

Questions can be asked during our panel discussion.

Captain's will be emailed notes prior to the Friday before the parade (Dec. 9th).

**ENTERING THE PARADE WILL BE DISCUSSED IN DETAIL
SEPARATELY WITH EACH CAPTAIN WITH YOUR DOCK WALKERS.**

BOAT NUMBERS

- Must be ***clearly visible***, well lit, and placed on Port, Starboard and Stern.

BRIDGES

- Immediately following the Parade when the last boat passes (Jungle Queen with Santa, #100), bridges will go back to their quarter and half hour schedules.

REMEMBER

- Maintain 150 feet of space (2 or 3 boat lengths) from vessel you are following (**SPACING**)
- ***NO ZIG-ZAGGING or SWERVING!***
- ***NO GRANDSTANDING***

**There Will Be Buoys South of Bridges
in the Intracoastal to Show 150 ft
to help with Spacing**



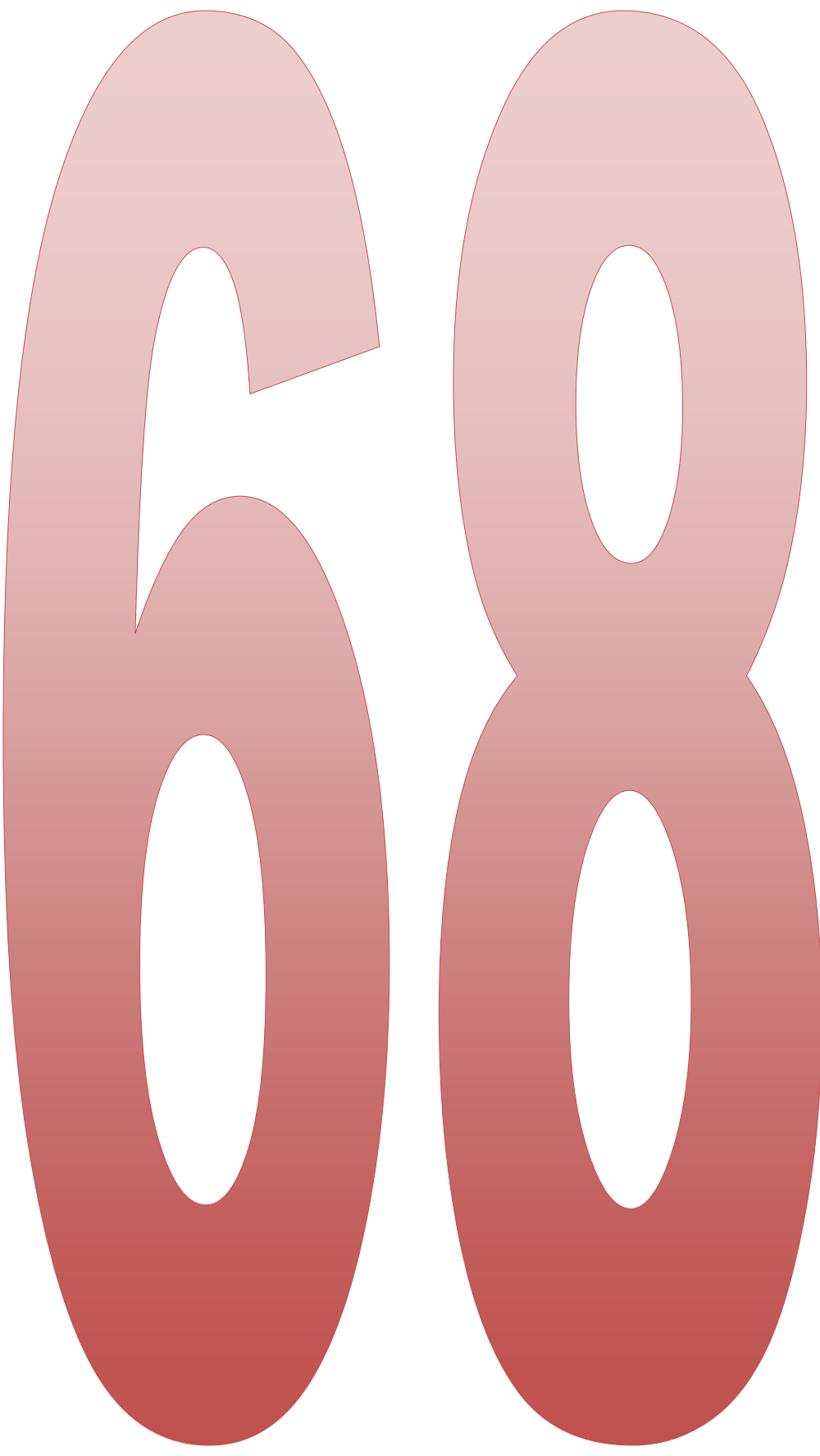
HAVE ADDITIONAL QUESTIONS?

Questions can be asked towards the end of the Captain's Meeting.

**You will also have the opportunity to talk
with your Dockwalker prior to the start of the meeting.**

**CHANNEL TO
MONITOR ON
DEC 10th**

**← YOU
ARE ON
CHANNEL
68!!**



PARADE DAY SCHEDULE

****Waterway Closures****

- **1:00–3:00 PM** **BOAT STAGING ENCOURAGED**
- **2:30 PM**** New River is closed to non-Parade participants—
2606993N 009192W to Marker 9, West of Cooley’s Landing
- **2:25 PM*** **BRIGHTLINE—Bridge down for train traffic**
- **3:25 PM*** **BRIGHTLINE—Bridge down for train traffic**
- **4:25 PM*** **BRIGHTLINE—Bridge down for train traffic**
- **4:45 PM** **MANDATORY STAGING TIME—SHOWBOATS/75’ OR LARGER**
- **5:00 PM** **MANDATORY DOCK TIME: ZONE F, G, & H**
(H ONLY at Cooley’s Landing)
- **5:20 PM**** Intracoastal Waterway **closes** South of Oakland Park Blvd.
- **5:23 PM*** **BRIGHTLINE—Bridge down for train traffic**
- **5:35 PM** **MANDATORY STAGING TIME: ZONE B, C, D, DW, & EW**
Non-Motorized Boats to enter at Cooley’s Landing and
head to Pre-Parade area Kayaks, Paddleboarders will
follow Dale R Water Taxi “Announcing the Parade”
SANTA WILL BE ON A HELICOPTER IN STAGING
- **5:50 PM** **Non-Motorized Entries HOLD WEST of USCG HUDSON**
ROLL CALL (*from Fort Lauderdale Marine Patrol*).
All boaters respond to control room on channel 68.
If no response, Zone Leaders and Dock-walkers will act.

MAKE SURE YOUR SOUND IS LOWERED AT THIS TIME!
If you have a DJ aboard, they must know when to turn their music
Down as it can prevent the boat next to them from hearing roll call.
- **6:00 PM** **NEW RIVER BRIDGES WILL BE OPEN FOR PARADE TRAFFIC**
INCLUDING BRIGHTLINE
Hudson will start heading towards the Triangle – followed by DaleR
and nonmotorized vessels
- **6:20 PM**** Intracoastal Waterway **closes** North of Oakland Park

PARADE DAY SCHEDULE

PRE-SHOW

- **6:00 PM** USCG HUDSON enter Parade followed by Dale R and Non-Motorized Boats and head east
GRAND MARSHAL
South Beach Lady (Grand Marshal Showboat) leaves River House Restaurant Dock and travels to Riverside Hotel.
~ 3,730 feet 1.5 knots => 24.5 min. 2 knots => 18.4 min.
These times could change based on a fast-outgoing tide in New River
Coast Guard Helicopter Flies Over VIP/Television
- **6:25 PM** *South Beach Lady* at 3rd Avenue Bridge

PARADE

- **6:30 PM** ***** START OF PARADE*****
—WSVN goes LIVE—
FIREWORKS – Followed by Fort Lauderdale Fire, United States Coast Guard, Ft Lauderdale Marine Patrol, BSO, to pace the Parade

***** FIREWORKS *****
SOUTH BEACH LADY follows Fireworks Barge
ROYAL PRINCESS (WSVN)
CAPRICE (RNDC)
SUNDREAM (Twin Peaks)
— **Zone B** enters Parade after *SunDream* passes – *Summerwind*
— **Zones C, D, E, EW, DW, F, G and H** to follow
- **6:30 PM** U.S. Coast Guard Hudson spud down near the triangle and wait for the Fireworks. DaleR and nonmotorized vessels will continue to Lake Santa Barbara
- **6:45 PM** U.S. Coast Guard Hudson starts to head to Lake Santa Barbara followed by the USCG 45, Fireworks and marine patrol
- **8:23 PM** **TRAIN BRIDGE DOWN FOR RAIL USE AFTER PARADE**



The Brightline will not be running during the parade, but please note that is scheduled during the following times and plan accordingly.

Departs the Fort Lauderdale Station heading to Miami at the following times:

06:37 AM	12:37 PM	PARADE
07:52 AM	01:42 PM	08:37 PM
08:37 AM	02:37 PM	09:25 PM
09:42 AM	03:42 PM	10:42 PM
10:37 AM	04:39 PM	11:42 PM
11:42 AM	05:42 PM	

See the complete schedule for the day on the next page.

FDC rail

06:20 AM	PARADE
07:26 AM	09:30 PM
	08:25 PM

Staging Your Boat



Shallows: A hump can develop near the last canal inbound on the north side. Be especially careful with deep drafts in low tide. Shallow areas marked in red near seawall on north, near marker 11 after the turn and near marker 12 before the turn.

Current: Strong currents when the tide is running. Strong current on your bow will make it difficult to turn.

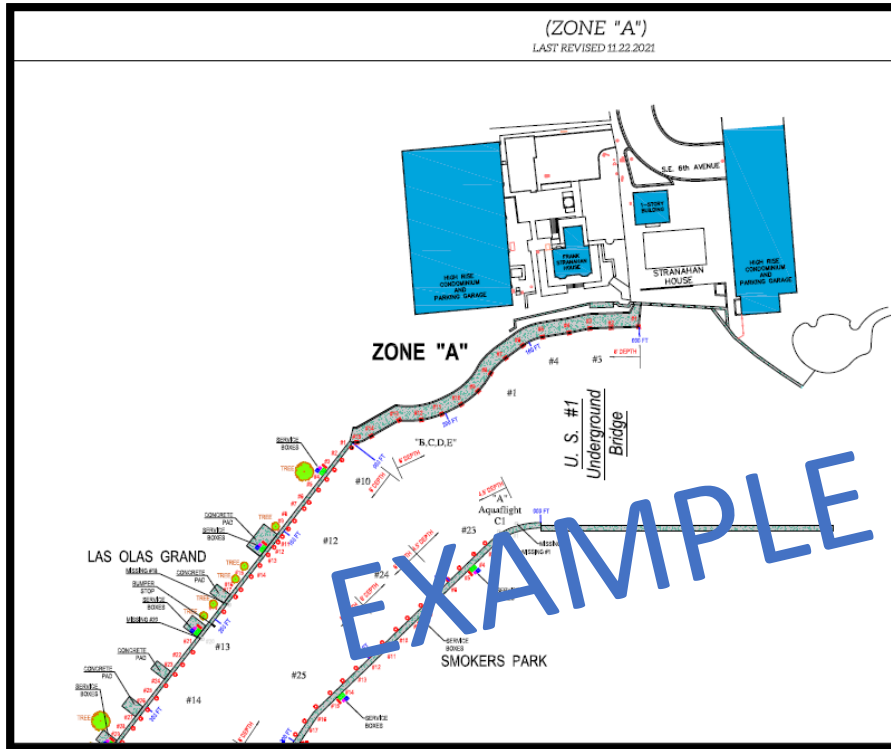
Finding Your Number: Each boat is assigned to a piling. The piling will have the boat's respective number clearly visible on an attached banner, Each boat shall dock and point east. The bow of the boat should line up with the numbered piling.



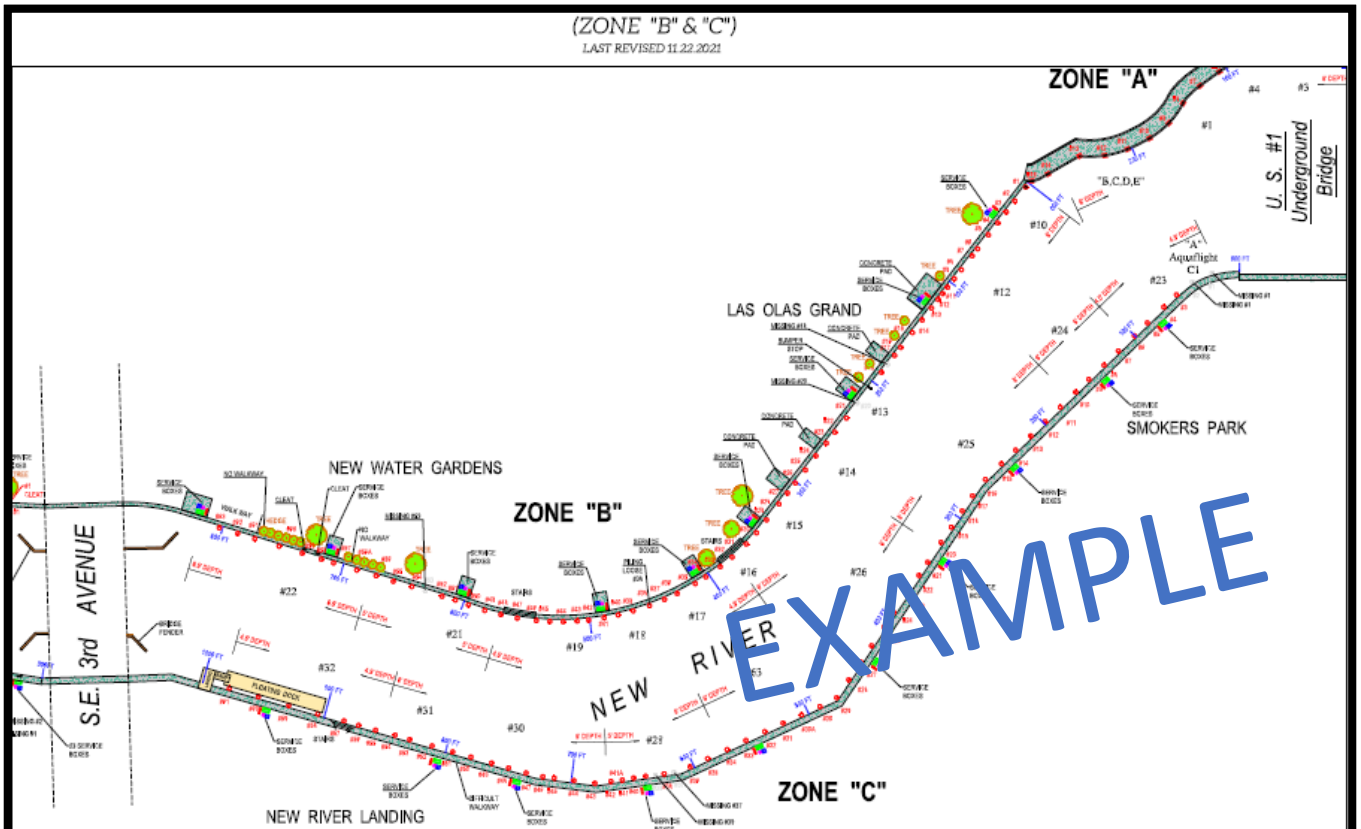
STAGING AREAS

****Please Note: You Will Receive A Separate Map, With Your Specific Zone and Placement**

ZONE A



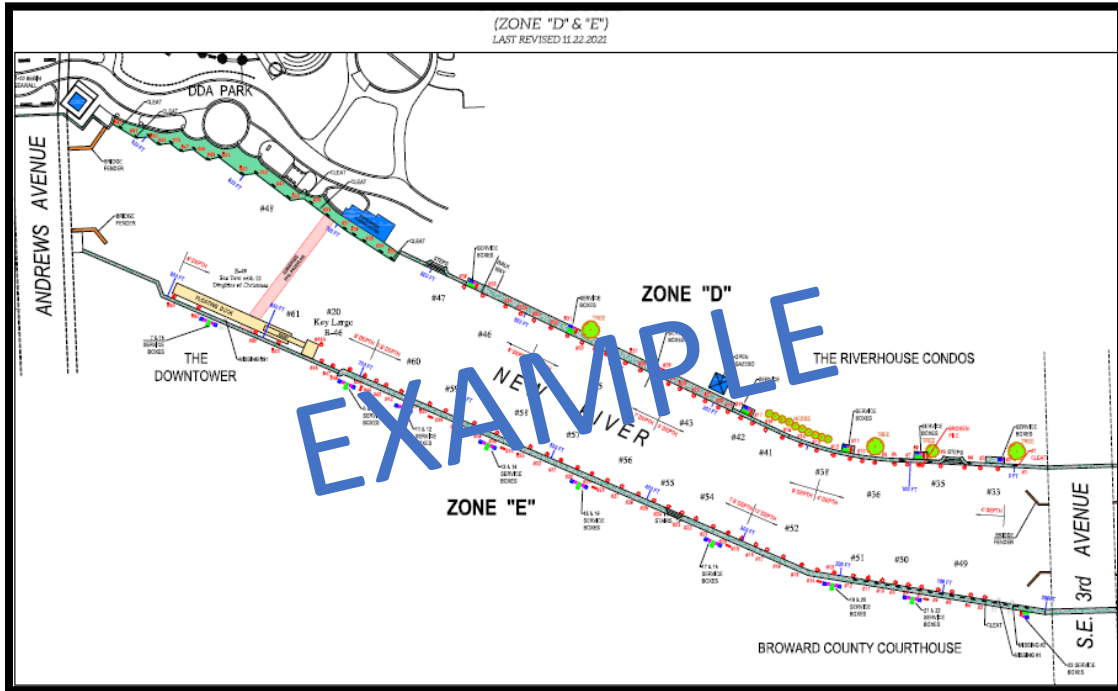
ZONES B & C



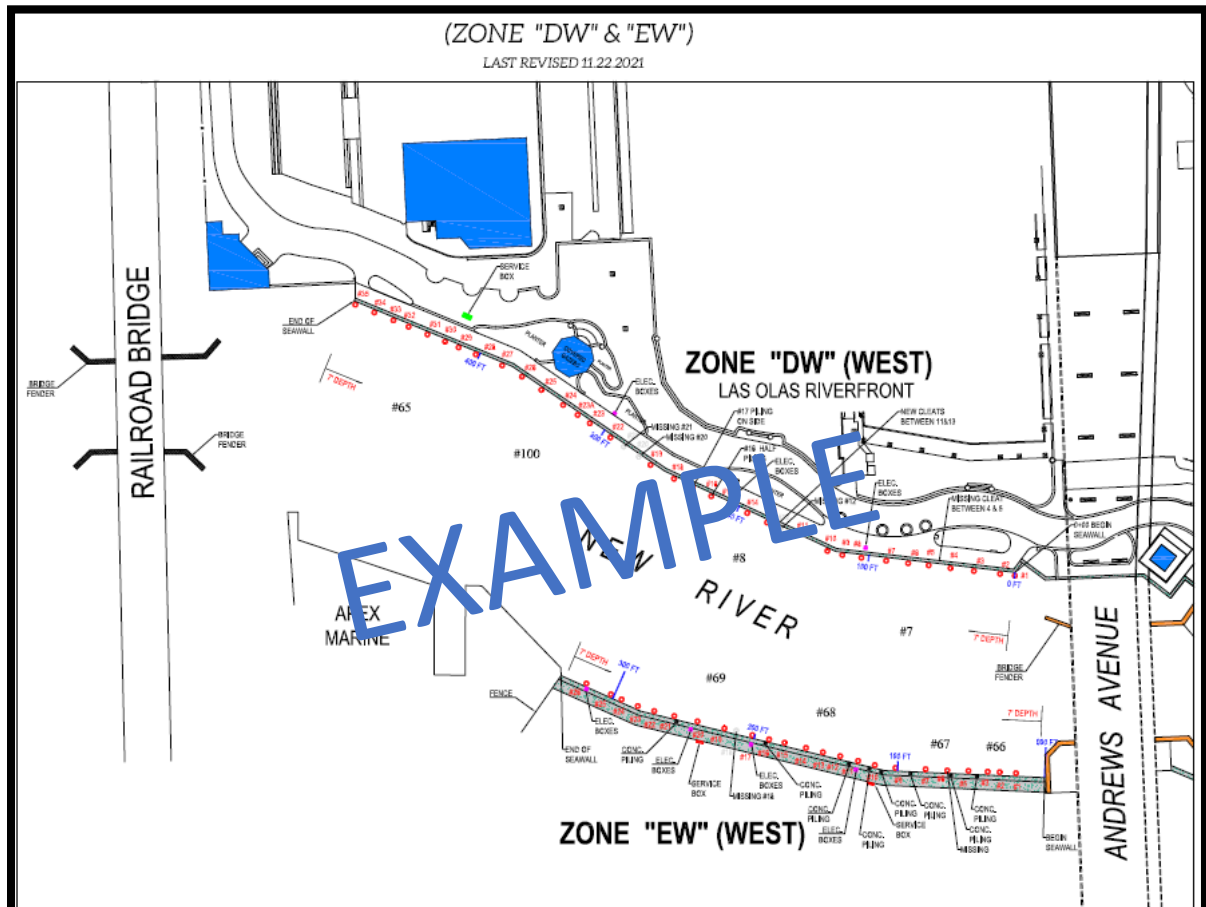
STAGING AREAS

****Please Note: You Will Receive A Separate Map, With Your Specific Zone and Placement**

ZONES D & E



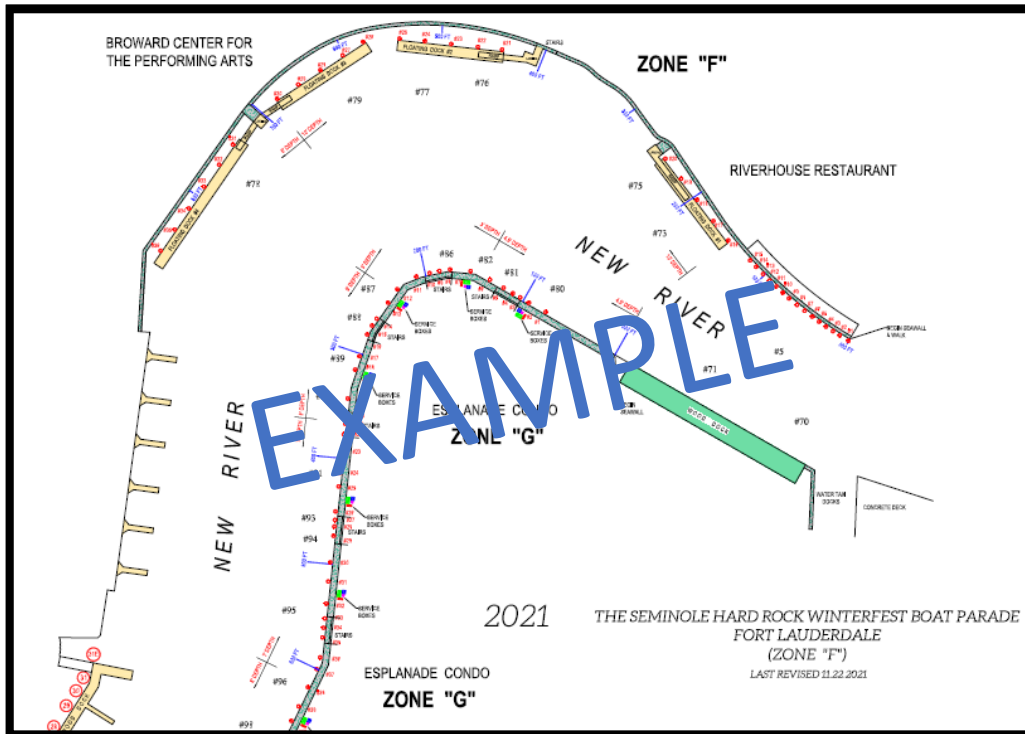
ZONES DW & EW



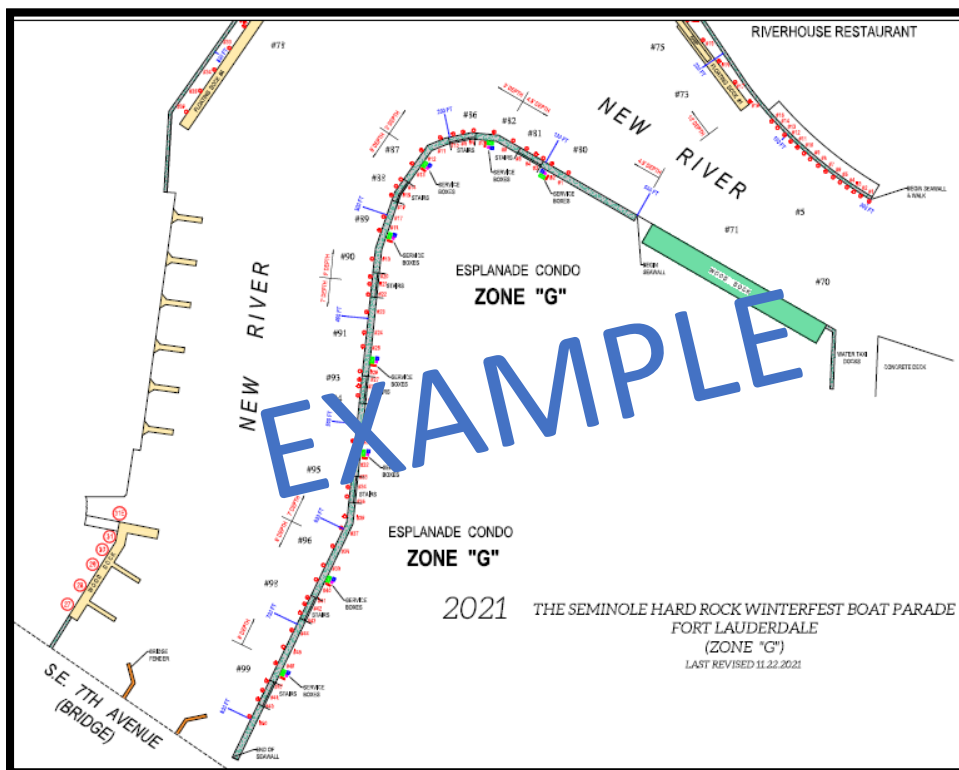
STAGING AREAS

****Please Note: You Will Receive A Separate Map, With Your Specific Zone and Placement**

ZONE F



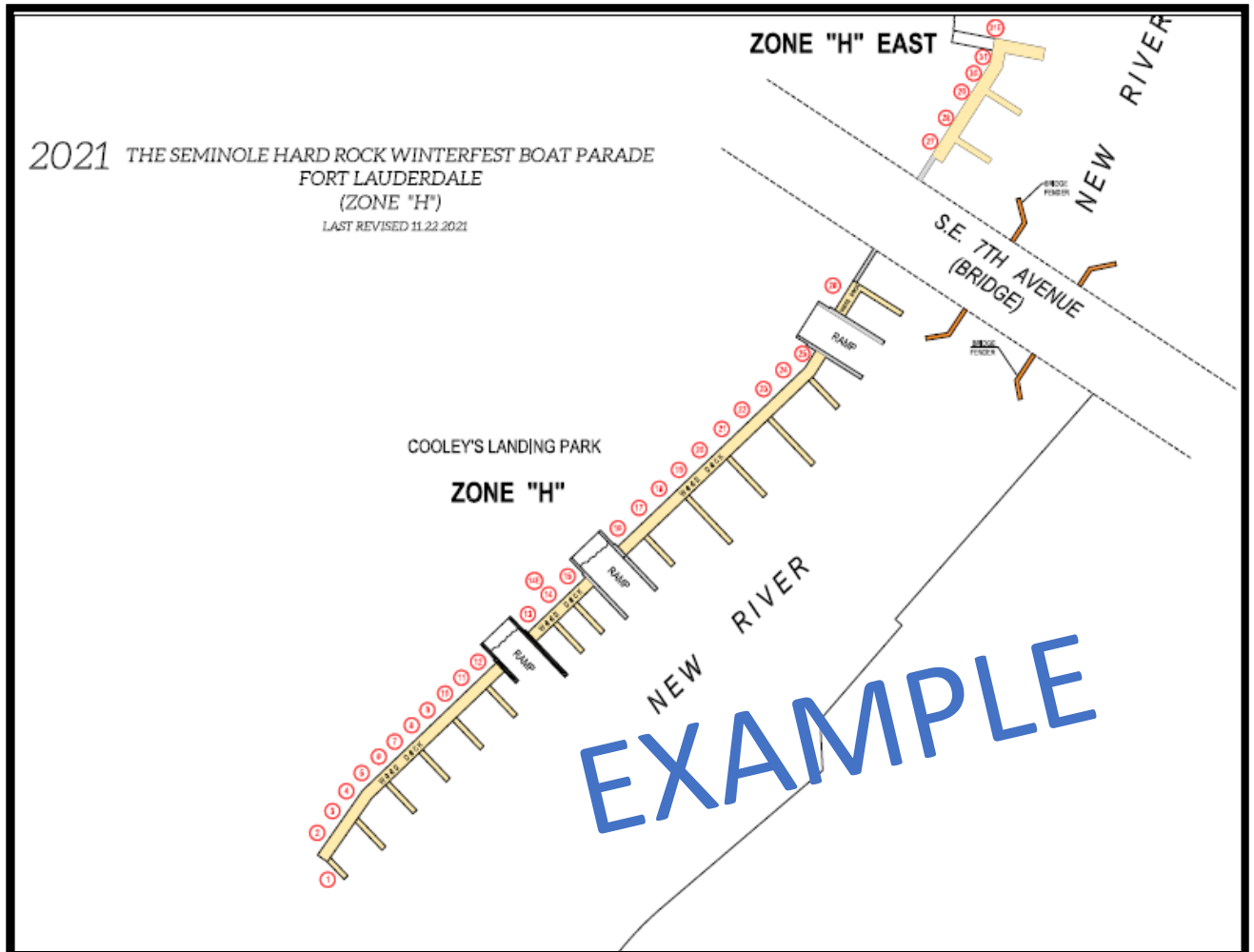
ZONE G



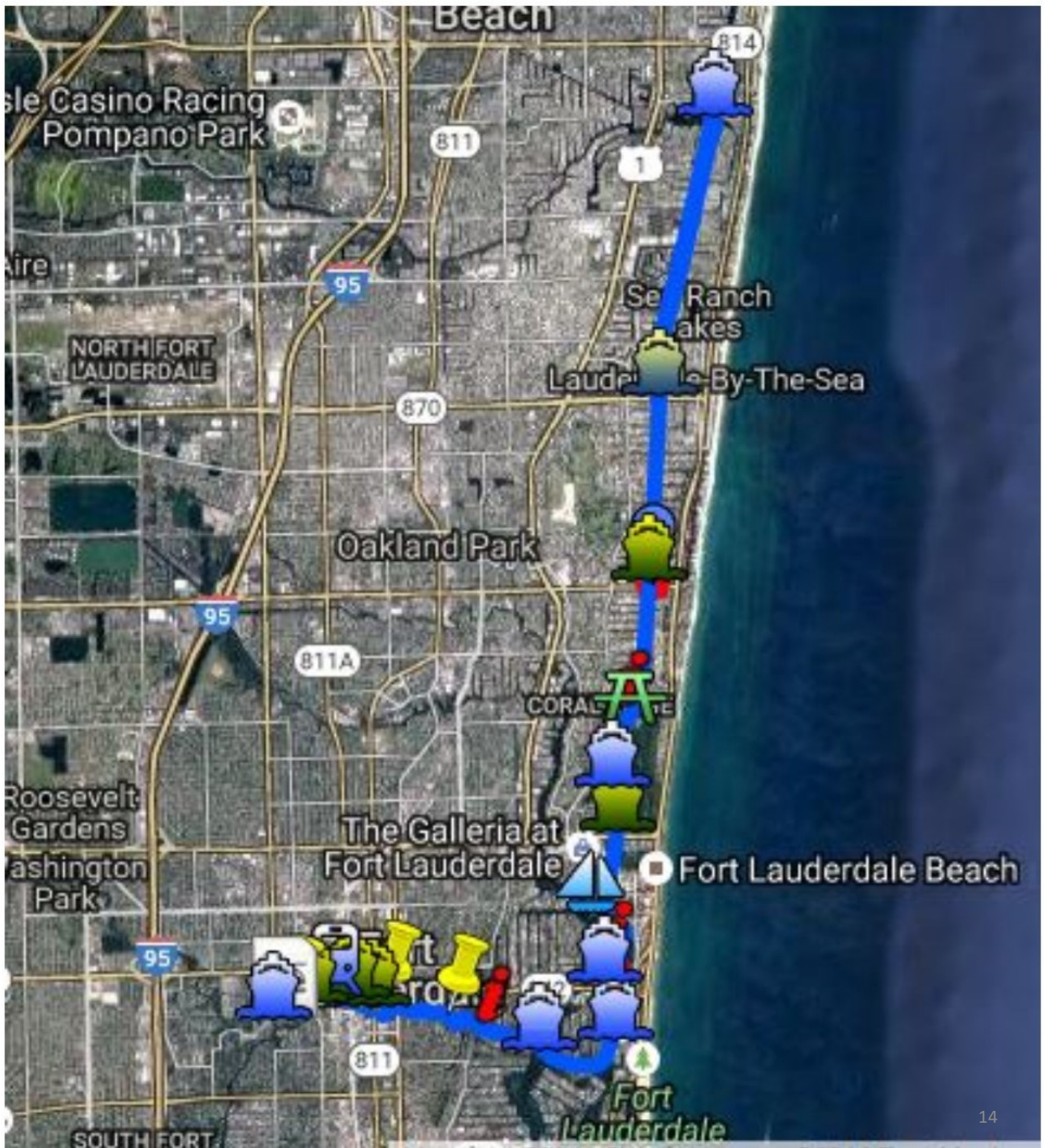
STAGING AREAS

*****Please Note: You Will Receive A Seperate Map, With Your Specific Zone and Placement***

ZONE H

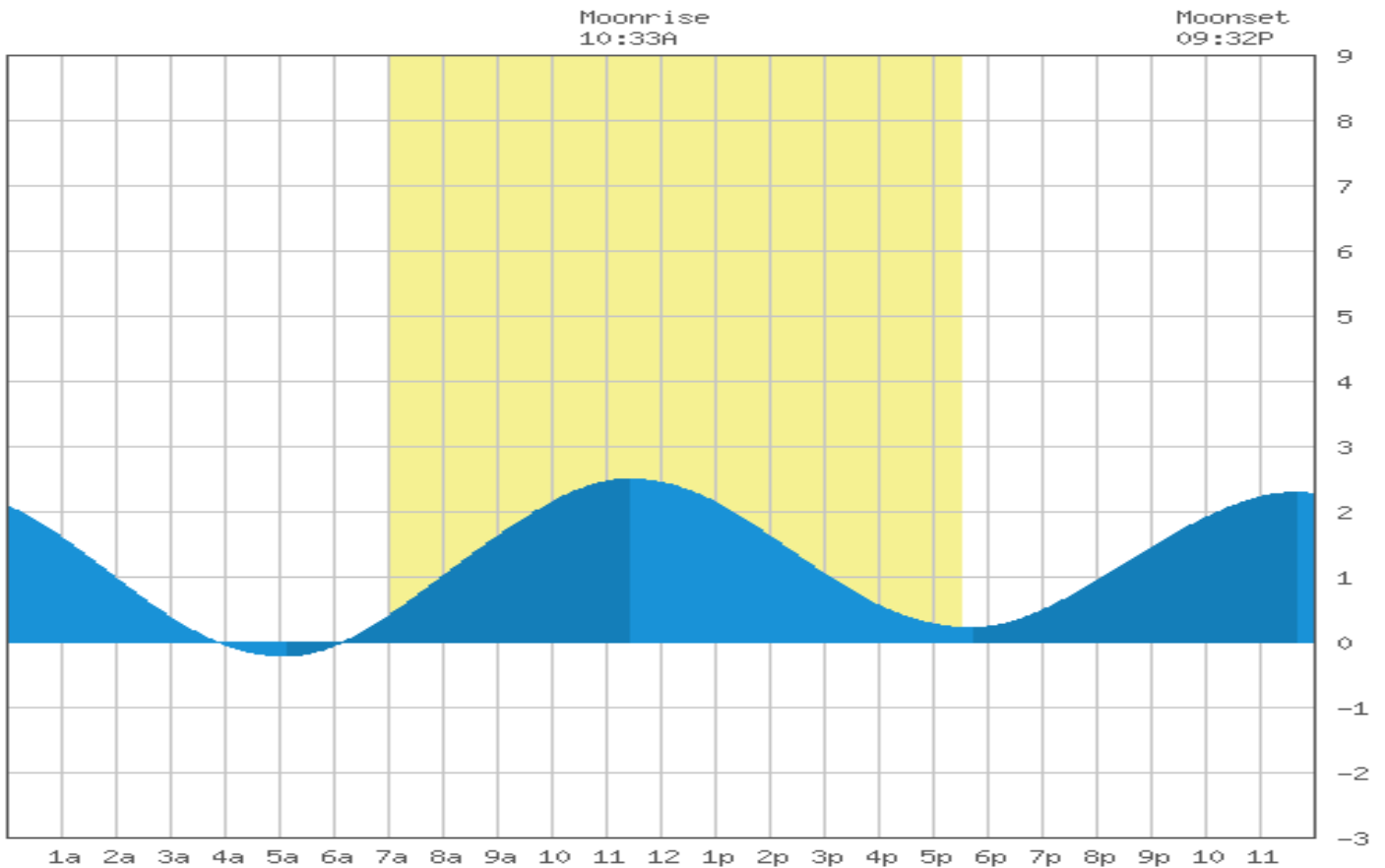


Route of Parade New River to Lake Santa Barbara



Tides

PLEASE REVIEW: Tide at Andrews Ave. Bridge for DECEMBER 16, 2023



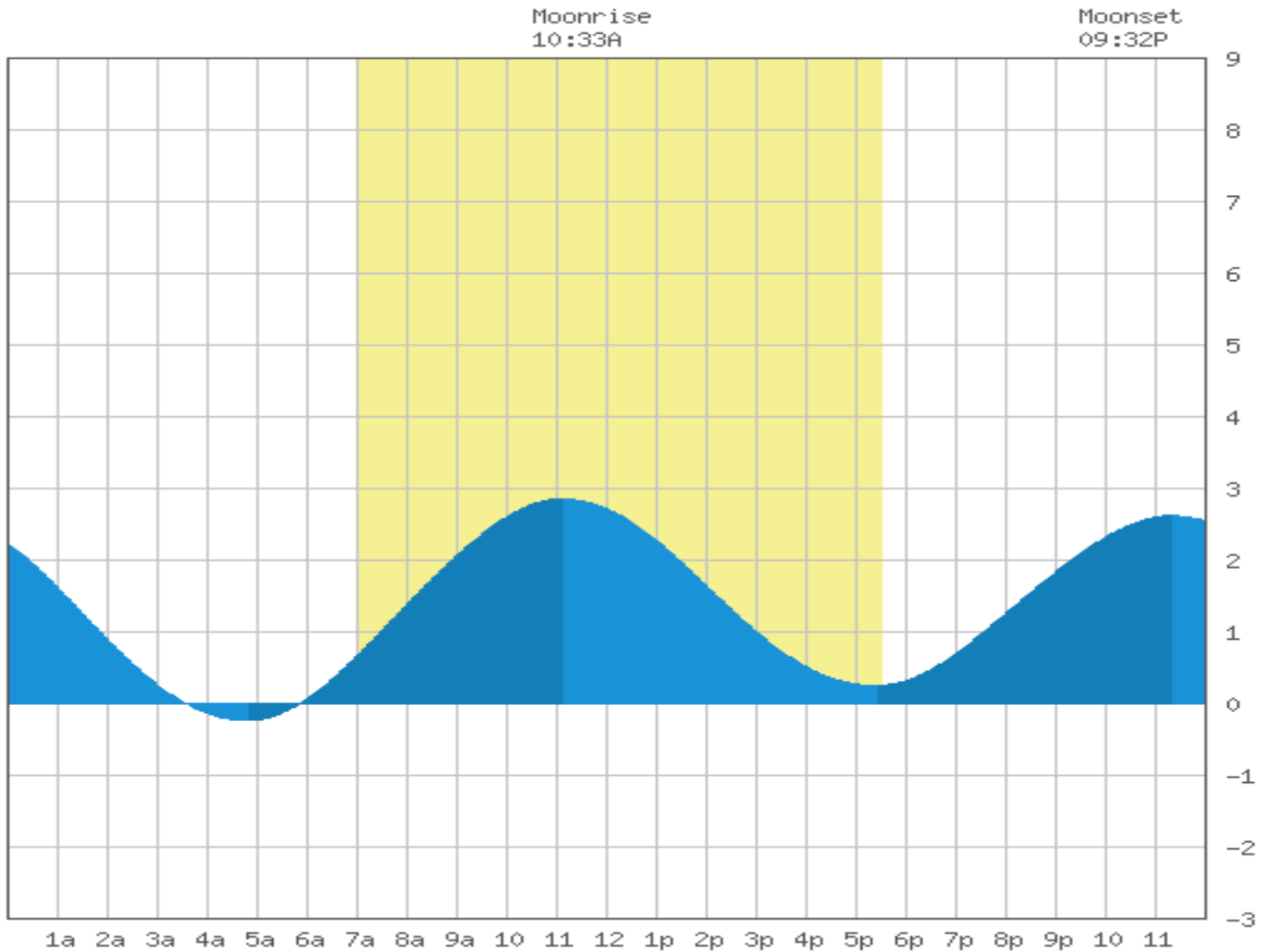
Andrews Avenue bridge, New River, Fort Lauderdale, Florida

- LOW TIDE: 05:06 AM – 2"
- HIGH TIDE: 11:24 AM 2'5"
- LOW TIDE: 05:41 PM 2"
- HIGH TIDE: 11:37 PM 2'3"

- Sunrise 07:00 AM
- Sunset 05:31 PM
- Moonrise 10:33 AM
- Moonset 09:32 PM

Tides

PLEASE REVIEW: Tide at Bahia Mar Yacht Club for DECEMBER 16, 2023



Bahia Mar Yacht Club, Intracoastal, Fort Lauderdale, Florida

- LOW TIDE: 04:48 AM 3"
- HIGH TIDE: 11:04 AM 2'10"
- LOW TIDE: 05:23 PM 2"
- HIGH TIDE: 11:17 PM 2'7"

Spacing and Timing

PARADE SPEED AND SPACING:

- **Spacing—150 feet (50 yards)** or safest distance at captain's discretion
- **ADJUST SPEED ACCORDINGLY TO ACHIEVE PROPER SPACING**

APPROXIMATE TIMING GUIDELINES DURING PARADE:

TIME REFERENCE: U.S. Hudson ETA At Each Bridge/Landmark

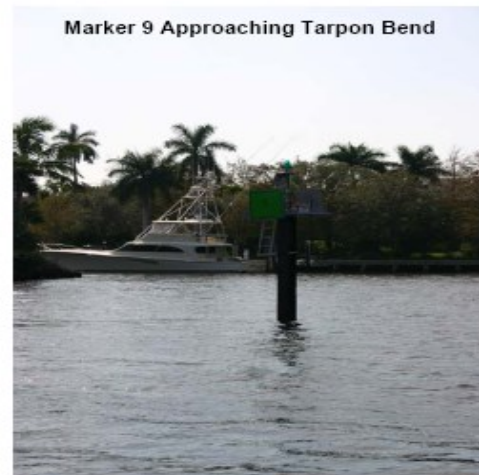
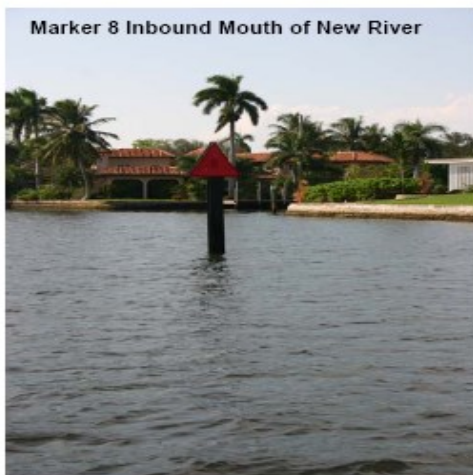
- ***Las Olas Bridge ~ 7:00p.m.***
- *(Riverside Hotel to Las Olas Blvd = 12,546 ft. Approx. time = 38.3 min)*
- ***Sunrise Bridge ~ 7:30p.m.***
- *(Riverside Hotel to Sunrise Blvd = 19,734 ft. Approx. time = 56 min)*
- ***Oakland Park ~ 8:00p.m.***
- *(Riverside Hotel to Oakland Park Blvd = 30,789 ft. Approx. time = 83.3 min)*
- ***Commercial Bridge ~ 8:30p.m.***
- *(Riverside Hotel to Commercial Blvd = 38,921 ft. Approx. time = 103.4 min)*
- ***Santa Barbara ~ 8:40p.m.***
- *(Riverside Hotel to Lake Santa Barbara = Approx. time = 134 min)*
- ***Lake Santa Barbara***
- *(South Bound) to Commercial Blvd = Approx. time = 30 mins)*

New River Waterway Highlights

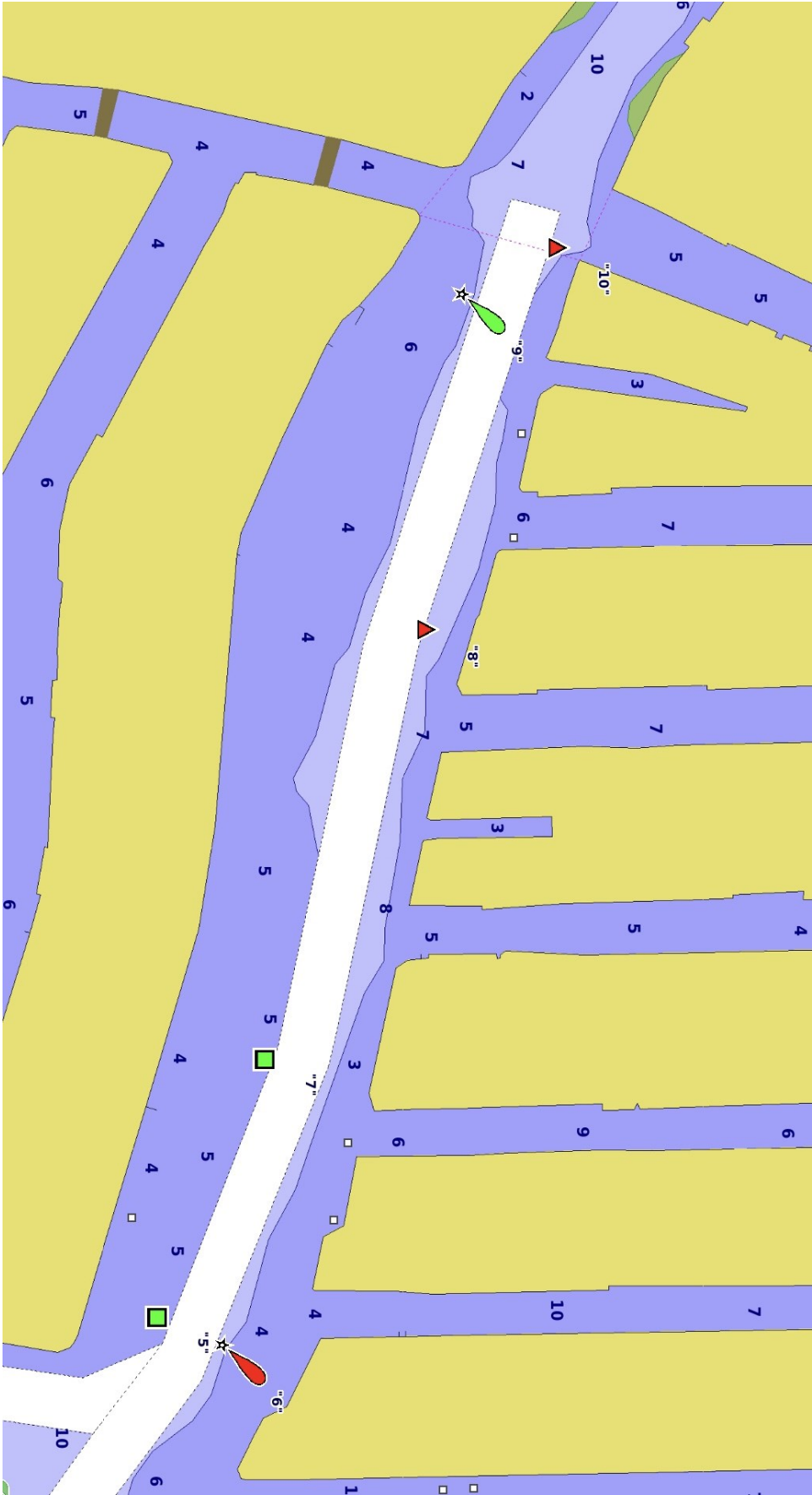
MOUTH OF NEW RIVER

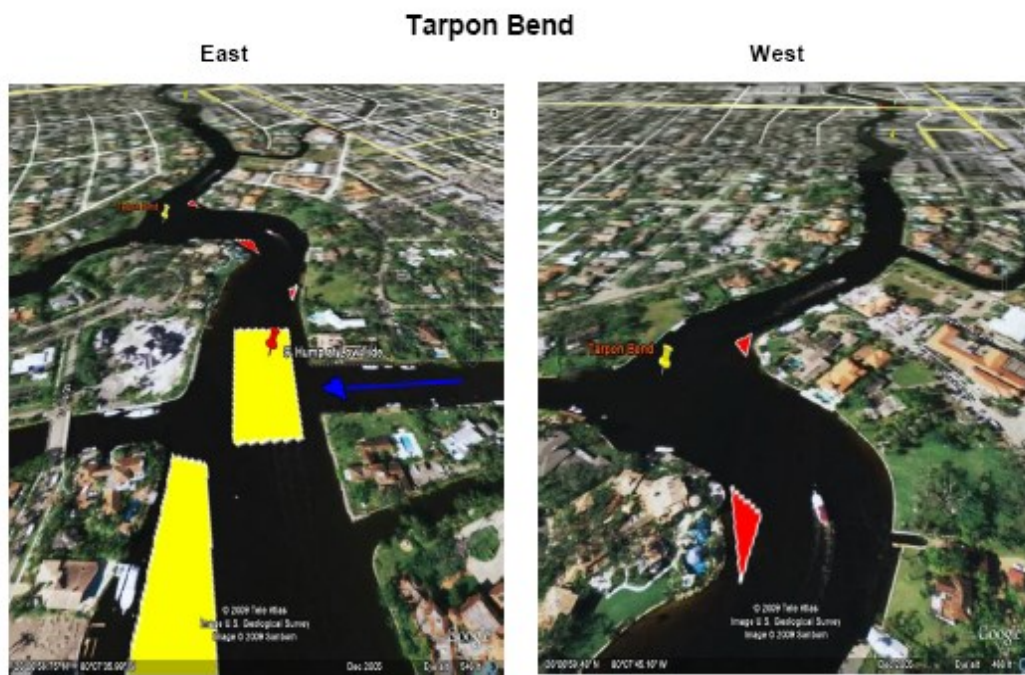


- **NEW RIVER**—Become familiar with the area!!!
- **Shallows:** Deeper water is on the north side of river—above in yellow.
- **Current:** Can be strong east/west current when tide is moving.
- **Wind:** The channel is a narrow area to work. On a windy day, your boat can get pushed out of the channel fast.
- **Passing:** There is **NO PASSING**.



MOUTH OF THE NEW RIVER:



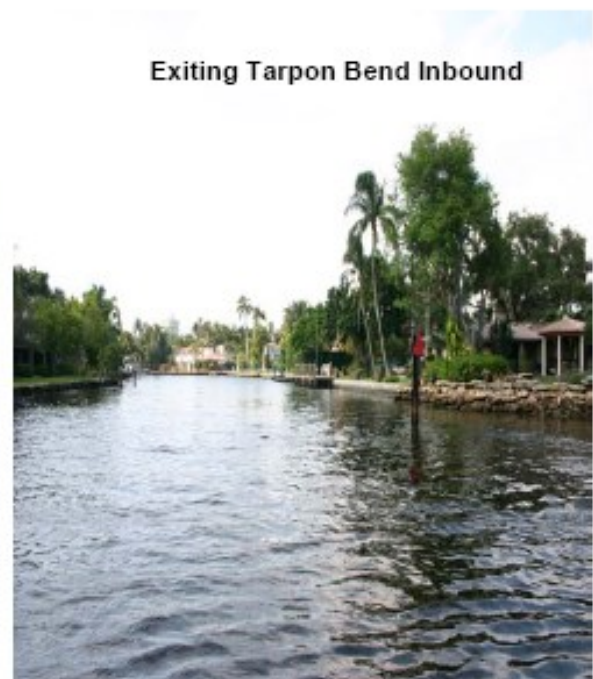
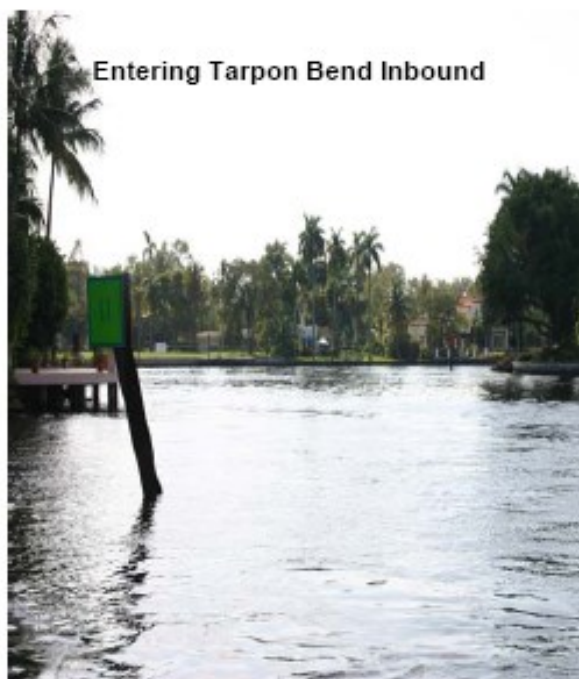


- Shallows:**

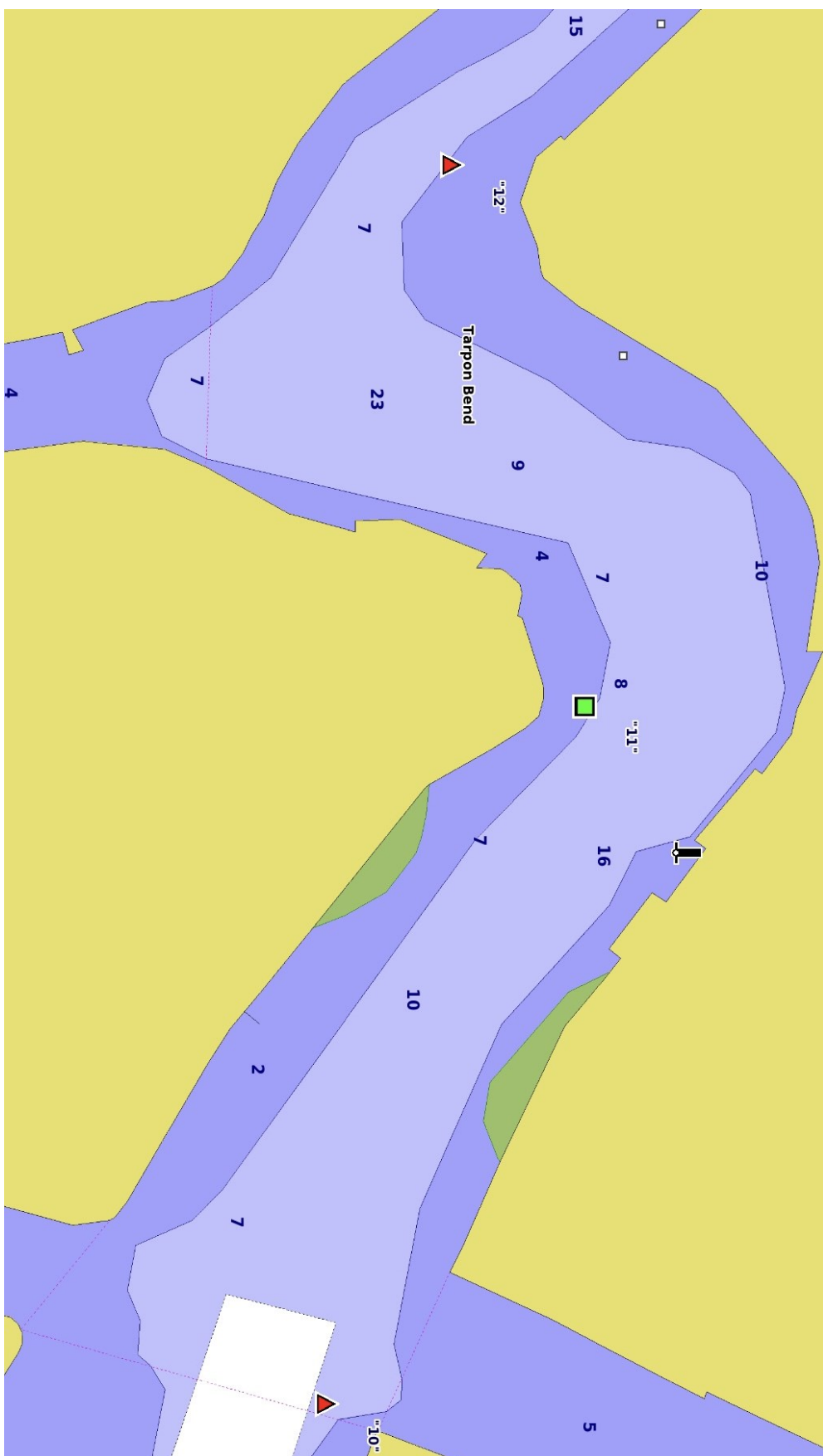
- A hump can develop near the last canal inbound on the north side. Be especially careful with deep drafts on low tide. Shallow areas marked in red near seawall on north, near marker 11 after the turn and near market 12 before the turn.

- Current:**

- Strong currents when the tide is running. Strong current on your bow will make it difficult to turn.



TARPON BEND:



CONDO



Shallows:

There is one small hump next to the concrete boat slip on the north side of the river.

Current:

Strong current can make the bends at the Condo difficult.

Approaching the Condo



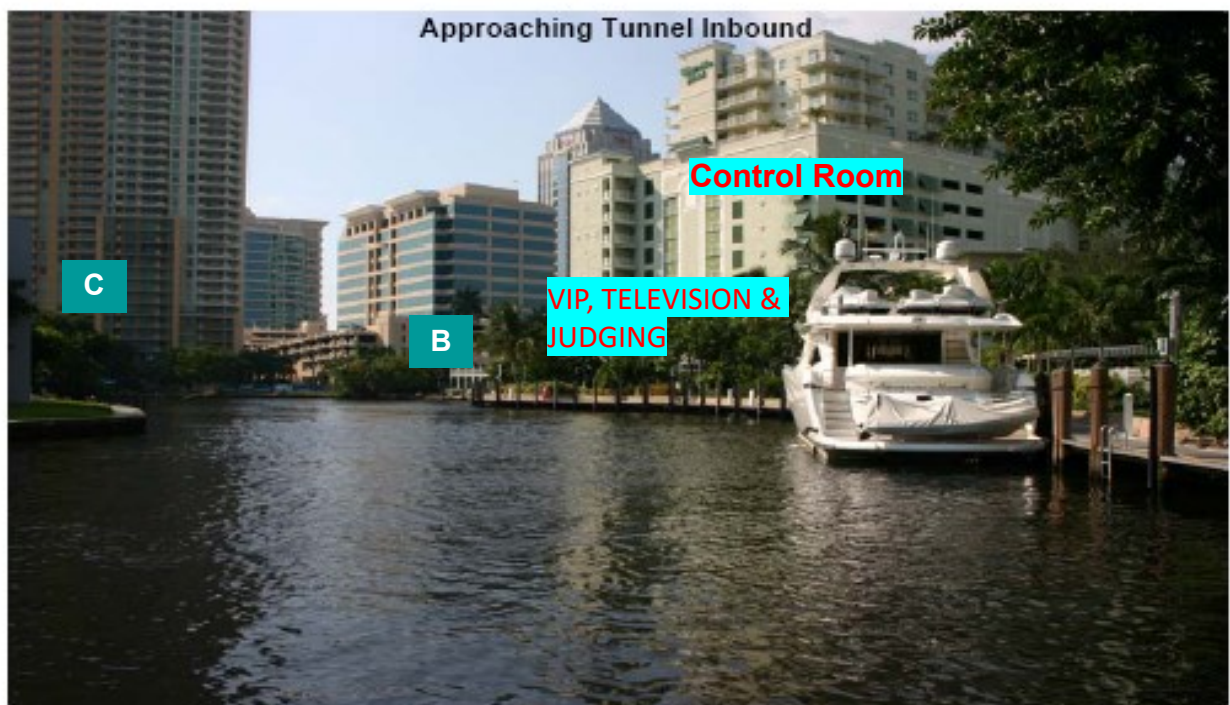
Tunnel



Shallows: Lots of room here, but do not get too close to the sea wall on the south side.

Current: Strong current can make the bend at the tunnel difficult.

Be aware, especially if you stop here to pass.



3RD AVE. BRIDGE



Shallows: None

Current:

Tight areas are always more difficult with strong currents. Fender systems under bridges will funnel water and increase the current.

Wind: Be prepared for strong gusts and quickly changing wind



ANDREWS AVE BRIDGE

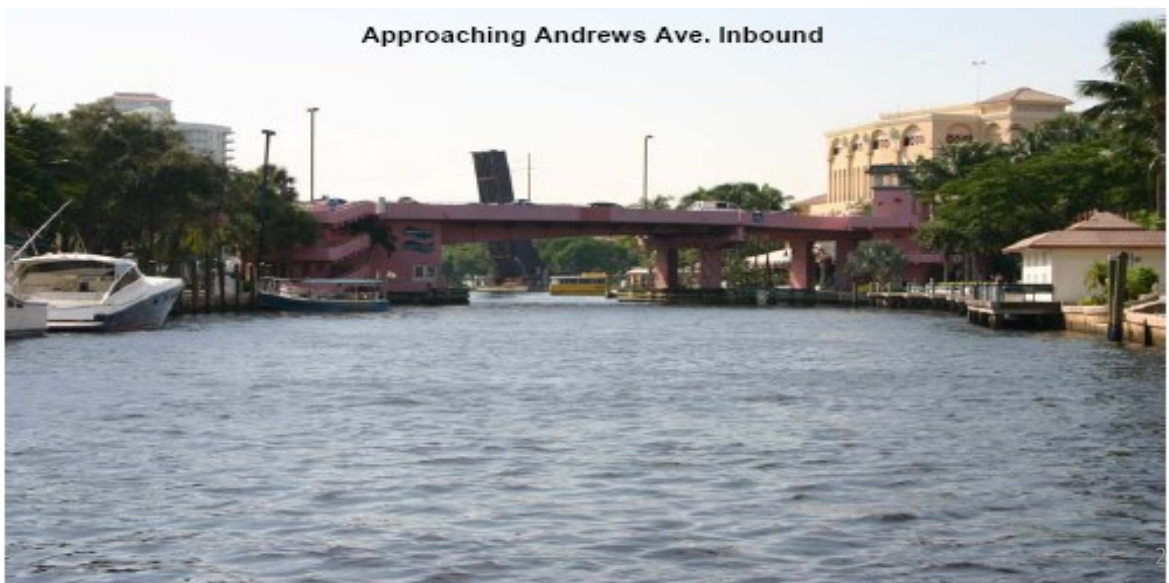


Shallows: None

Current: Tight areas are always more difficult with strong current. Fender systems under bridges will funnel water and increase the current.

Wind: Be prepared for strong gusts and quickly changing wind directions due to tall buildings.

**This is the slowest bridge on the River;
call Channel 9 early for an opening or call 305-889-5572.
Andrews Ave Bridge: 954-974-4100**



An aerial map of the Tule River area. The Tule River flows from the top left towards the bottom right, then curves back towards the top right. A yellow line with arrows indicates the river's path. A red arrow points to a 'V' shaped bend in the river labeled 'V Bend at Low Tide'. A yellow arrow points to a bridge labeled 'TULE RIVER BRIDGE'. Another yellow arrow points to a bridge labeled 'FEC RAILROAD BRIDGE'. A red arrow points to a bridge labeled 'FISHING HOLE BRIDGE'. The map shows surrounding infrastructure, including roads, buildings, and a large white building. The Google logo is visible in the bottom right corner.



Shallows: The inside of the turn at the Performing Arts Center gets shallow. Make wide turns and don't get pinched too close when passing other vessels.

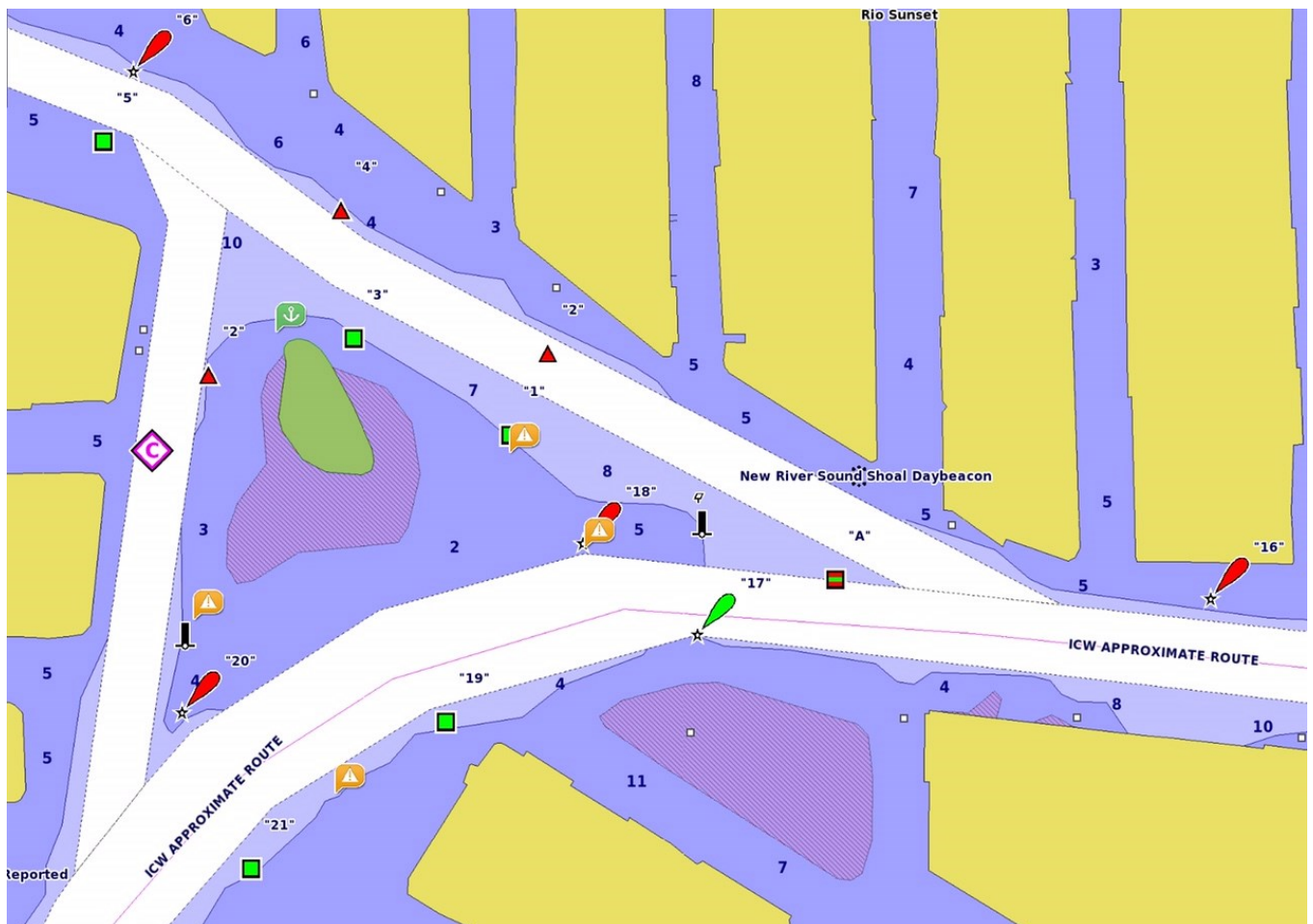
Current: Tight areas are always more difficult with strong currents. Fender systems under bridges will funnel water and increase the current.

Wind: Be prepared for strong gusts and quickly changing wind directions due to tall buildings.

Be careful of the turn at the Performing Arts Center. Strong current on your bow will make it difficult to turn.

THE TRIANGLE:

.. Remember to pass **NORTH** of the demarcation marker in this area!



PARADE VIEWING AREA – Las Olas Boulevard and the Intracoastal (Southeast Corner) with 2,500 attendees

LAS OLAS BLVD.

PARADE VIEWING



END OF BOAT PARADE

IF YOU LIVE NORTH OF LAKE SANTA BARBARA

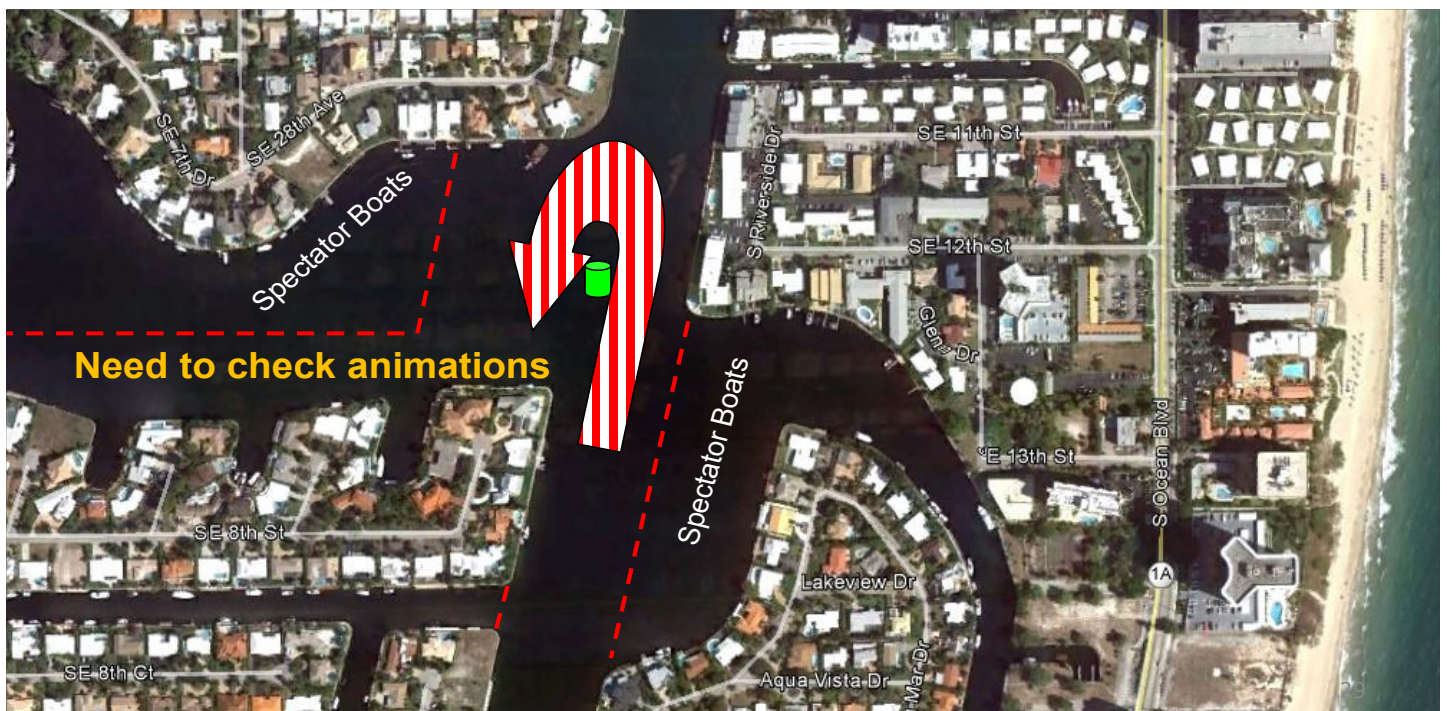
The Parade ends for you at Lake Santa Barbara

- Boaters living north of the TOURNING BUOY - continue Northbound at this point toward your docks or other destinations

IF YOU LIVE SOUTH OF LAKE SANTA BARBARA

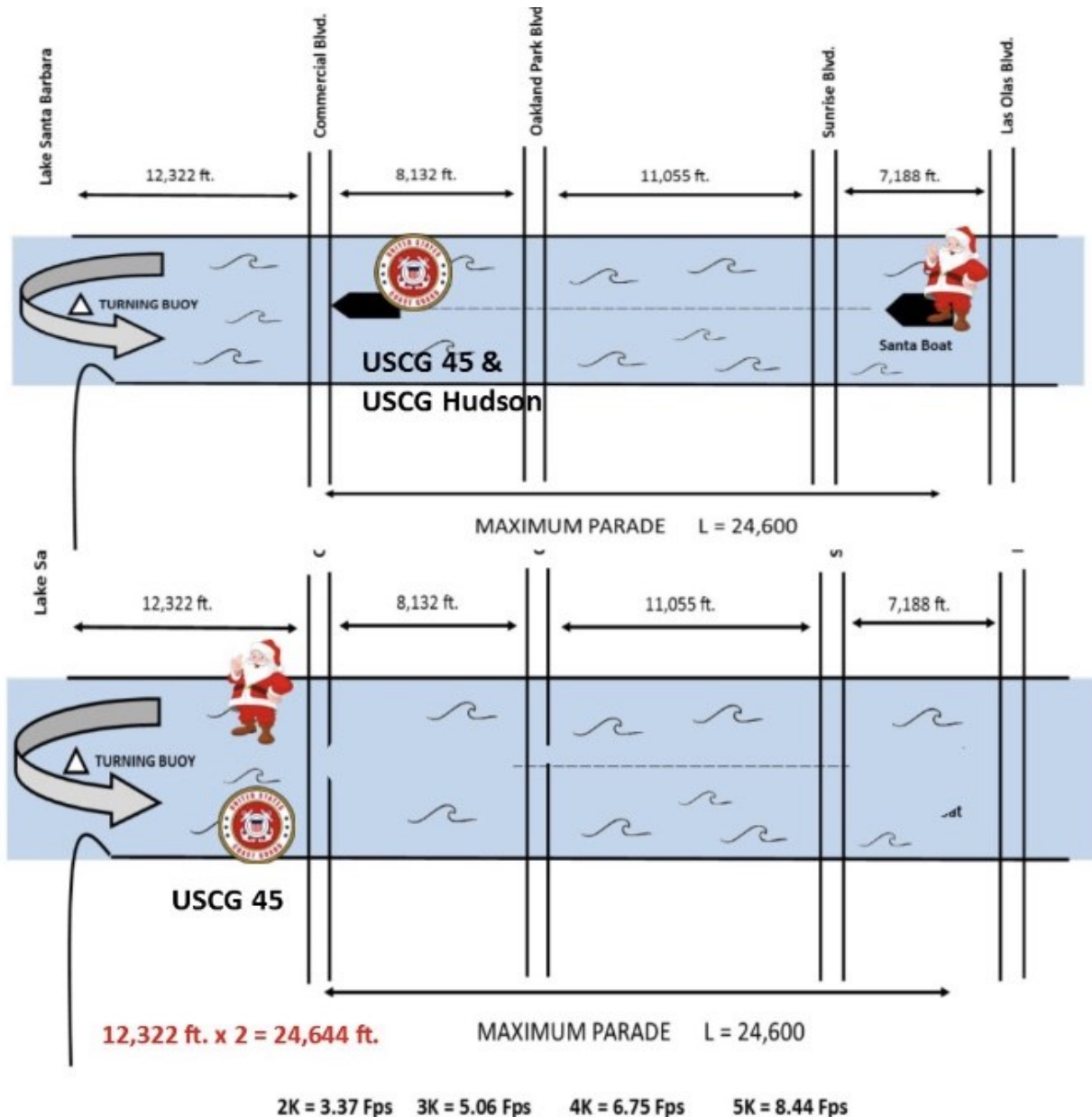
The Parade ends at Commercial Boulevard Bridge

- ***ALL PARTICIPANTS TRAVELING SOUTH from the Turning Buoy at Lake Santa Barbara*** will continue at Parade Speed and in Parade Procession. Southbound boaters can follow the 45' USCG and the USCG Hudson as you travel south. This procession will continue south of **Commercial Boulevard Bridge**.
- *Fort Lauderdale Marine Patrol* will continue to escort Parade participants South to help with the mix of Parade Participants and Spectator Crafts. Prior to the parade, you will know exactly what boat you should be following South if you are continuing south after Lake Santa Barbara.



Why Spacing is So Important: The Slinky Effect

- To keep the integrity of the Parade, vessels need to keep consistent spacing. The parade stays in procession as it travels to the buoy, goes around the buoy and travels South to Commercial Bridge. If you reside North (you can continue north of the buoy to your home dock).

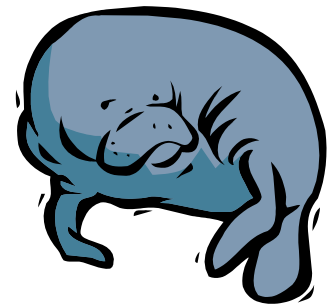


IF you live north— continue north to your dock

WATCH & REPORT to Parade Control if you see:

- Vessels having difficulty maneuvering the Parade
- Spectator crafts too close to the Parade path
- A manatee in the Parade path
- Disabled vessel in Parade path
- Vessels that are too slow OR too fast
- Excessive separation between vessels
- Boats that are meandering or “showboating,” causing a boat to slow and speed up their Parade pace

**WATCH along the ROUTE
and stay clear of protected species
and seagrass areas**



***Report any protected species injuries, or deaths immediately to
Channel 68 or 954-292-6314 (Kathy Keleher)***

FWC Wildlife Alert Hotline 888-404- FWCC (3922).

Dial *FWC or #FWC, and follow-up with an email within 24 hours:

ImperiledSpecies@myfwc.com

National Marine Fisheries Service's Protected Resources Division at:
takereport.nmfsr@noaa.gov.

The e-mail must be sent within 24 hours of the event and must include
(1) The type of species captured (i.e., manatee). NOTE: Small tooth
Sawfish captures should also be reported to the online encounter
database at

<http://www.flmnh.ufl.edu/fish/sharks/sawfish/form.html>

- (2) Date and time of capture;
- (3) Location and activity resulting in capture (i.e., fishing tournament);
- (4) Condition of the species caught (i.e., alive, dead);
- (5) Size of the individual, behavior, and identifying features
(i.e., presence of tags, scars, or distinguishing marks);
and any photos that may have been taken.

****Please look in your Captain's Bags for Sea Turtle / Manatee
paperwork****

TV & JUDGING



•Blue Zone:

•Cameras are on you from the moment you turn the bend! Prepare to put on your best performance for the cameras in the **red zone**.

•Red Zone: Stranahan House / Laura Ward Park—Judges are focused on you and Cameras are rolling! Perform your heart out!

•Yellow Zone:

•Cameras are in this area, but they have already captured performances near the judges, which is the red zone. Stay at Parade Speed—there are no cameras east of Riverside Hotel.

•Las Olas and Intracoastal:

•**Filming/Photography** will be taking place at the Parade Viewing Area to capture footage of the Intracoastal Waterway.

JUDGING OF YOUR ENTRY:

- Judging occurs from the Laura Ward Park.
- Please make sure your boat is sufficiently decorated for the Parade or you may be asked not to enter next year! For tips, visit the page on our website below:

<https://winterfestparade.com/captains-log/decorating-tips-for-your-boat>

***GET VOTES to win the People's Choice Award!
Tell your friends & Family your Boat #!***

PEOPLE'S CHOICE AWARD:



Boaters have the opportunity to be chosen by spectators and television viewers from the Parade start on December 16th until Jan. 8th. Remember the Viewing Area at Las Olas Boulevard is one of the largest Parade viewing locations open to the public.

**VOTE one of two ways for
the “People’s Choice Award”:
ONE OUR WEBSITE OR ON THE APP
Vote everyday**

***Download the Winterfest
App!***

**NO LIVE SANTAS allowed on
any boats besides the
Santa Showboat —# 100.
Use plastic, inflatables, etc.**

**If you have MMS # - your friends
will be able to see you on our app!**



Terms and Conditions
ALL DÉCOR, THEME and SIGNAGE MUST
BE APPROVED BY WINTERFEST, Inc.

Winterfest reserves the right to stop a entry from participating in the parade if the vessel hosts, signage NOT approved by Parade Committee prior to parade day. SIGNAGE AND DECORATIONS ARE BE SUBJECT TO INSPECTION BY WINTERFEST. Winterfest, Inc. Reserves the right to prevent any boat from participating in the parade that displays obscene, vulgar or offending decor. Participants, guests and décor must NOT show or suggest nudity or profanity. By signing this application, applicant hereby acknowledges and consents to be bound by the terms and conditions of this application. The Seminole Hard Rock Winterfest Boat Parade is a family event which will be viewed by children and adults of all ages, races and beliefs. Applicant is hereby notified that all decorations, costumes and entertainment MUST be wholesome and suitable for viewing by minors.

REMINDER: Please keep in mind that in the eyes of a child there is only **ONE Santa Claus**. Only ONE boat will be allowed to host a LIVE SANTA CLAUS OR SANTA IMAGE which is boat #100 - therefore, any vessel (other than the one designated by Winterfest) with a Santa Claus or person with a Santa Hat and beard or characters that resemble "a kind of Santa" (such as a Mickey Claus, Homer Clause, etc.) will NOT be permitted to participate in the parade WITHOUT written consent by parade officials. **PLEASE NOTE:** Winterfest, Inc. could request you to not participate the night of the parade if you are not pre-approved to host a "Santa or Claus-type Image." Winterfest Inc. makes no inspection for misappropriation or infringement of third party trademarks, copyrights, publicity rights, rights to names, likeness or characters or other intellectual property rights ("IP Rights").

PROOF OF INSURANCE:

ALL BOATS MUST provide proof of insurance to the Winterfest Office before being considered for Parade participation. Proof of Insurance and liability requirements are: Full Liability, property damage and personal injury insurance on their vessel. Proof of coverage in the form of a certificate of insurance will need to be submitted to our office with application or can be faxed (954.767.0665) by your agent.

2023 RELEASE, INDEMNIFICATION FROM LIABILITY AND CONSENT:

The undersigned, his or her heirs, successors, executors, administrators and assigns (collectively, "undersigned") hereby agree to participate as a vessel owner and/or control boat volunteer in the December 16, 2023 SEMINOLE HARD ROCK WINTERFEST BOAT PARADE ("Parade") AT THEIR OWN RISK and understands that Winterfest, Inc. ("Winterfest") shall not be liable for any active or passive action or omission in connection with or resulting from the Parade and any activities related to, occurring around or in connection with the Parade, and all activities in preparation for or in any way related to the Parade and the undersigned's participation in any of the 2023-2024 Winterfest Activities INCLUDING, BUT NOT LIMITED TO, THOSE ACTIONS OR OMISSIONS RESULTING FROM WINTERFEST'S OWN NEGLIGENCE or the actions or inactions of any other person or entity including any person or entity under the control, supervision, or sanction of Winterfest before, during or in route to or from the 2023-2024 Winterfest activities. In addition, the undersigned hereby fully releases, indemnifies and holds harmless Winterfest, its sponsors, vendors, supporters, employees, officers, directors, agents, volunteers, successors, assigns, local, state and federal government agencies, and any person, firms, entity or corporation in privity with any of them from any and all liability, loss, damage, trespass and/or injury (including all attorney's fees and costs) arising from any claims, demands, cause of actions or lawsuits whatsoever, in law or in equity, made by any person or entity, including, but not limited to, the undersigned, any participant, entrant, their companions, captain's mates, crew members, guests, volunteers, vessel owners or equipment owners, as a result of any act or omission by the undersigned or any person on the vessel of the undersigned, or through any contact by the vessel with any person or thing in any way in connection with or resulting from the Parade, the activities related to or occurring around the Parade, and all activities in any way related to the 2023-2024 Winterfest activities INCLUDING THOSE RESULTING FROM SUCH PERSON'S OR ENTITY'S OWN NEGLIGENCE. (next page)

As a vessel owner and/or control boat volunteer, and in consideration of being allowed to participate in the Winterfest Parade events and activities, I hereby:

- Acknowledge that some, but not all, of the risks of participating in the Winterfest Parade activities may include:
- Changing water flow, tides, currents, wave action and ships' wakes,
- Collisions with any of the following: other participants, the watercraft, other watercraft, and manmade or natural objects,
- Wind, inclement weather, lightning, variances and extremes of wind, weather, and temperature,

2023 RELEASE, INDEMNIFICATION FROM LIABILITY AND CONSENT, CONTINUED:

- Undersigned's sense of balance, physical coordination, ability to operate equipment, swim and/or follow directions,
- Collision, capsizing, sinking or other hazard which results in wetness, injury, exposure to the elements, hypothermia, and/or drowning,
- The presence of insects and marine life forms,
- Equipment failure or operator error,
- Heat or sun, moon or other lighting related injuries or illnesses, including, without limitation, sunburn, sunstroke or dehydration, temporary inability to perceive events due to lighting, and/or
- Fatigue, chill and/or dizziness, which may diminish my/our reaction, time and increase the risk of an accident.

Agree to assume responsibility for all the risk of the activity, whether identified above or not. My/our participation in the activity is purely voluntary. I assume full responsibility for myself, my agents, guests, crew, mates, employees, assigns, heirs, executors, administrators and any minor children thereof, for any trespass, bodily injury, accident, illness, paralysis, death, loss of personal property, damages and expenses thereof, including attorneys' fees and costs resulting or in any way arising from, or in connection with, participation in the 2023-24 Winterfest Parade and Winterfest activities.

I certify that I have a current policy providing hull, liability, property damage and personal injury insurance on the boat. I have entered on this application and I have an operative VHF radio on board. I understand that the boat owner or skipper and the person monitoring the radio MUST attend the "Skipper's Meeting" (December 12, 2023) and attendance at the "Captain's Meeting" is mandatory and cannot be waived.

I agree to comply with all Seminole Hard Rock Winterfest Boat Parade rules and U.S. Coast Guard Safety Standards (Charter vessels please include a copy of your Coast Guard Certification with your vessel) in the operation and navigation of my boat sailing to, during the Parade sailing procession and returning to the boat's home port.

I represent and warrant that the vessel, its signage, lighting, decorations, costumes, performances, characters, displays and other visual or audible features of the vessel, its passengers and/or crew, as appearing in the Parade, will not misappropriate or infringe any IP Rights and I understand that procurement of any third party rights, licenses and approvals necessary are the sole and exclusive responsibility of the owner of the vessel and are not the responsibility of Winterfest, Inc.

Signing the front page of this manual also hereby consents and grants Winterfest the right to use images and recordings of the undersigned and its vessel, without cost or additional consent, for promotion of any Winterfest events, including, without limitation, current and future Parades. By signing this manual, the undersigned acknowledges that it has carefully read this entire form, fully understands that it is a waiver and release of liability, and agrees to all provisions herein.

2023 RELEASE, INDEMNIFICATION FROM LIABILITY AND CONSENT, CONTINUED:

The Seminole Hard Rock Winterfest Boat Parade is a family-oriented event which will be viewed by children and adults of all ages. Applicant is hereby notified that all decorations and entertainment must be wholesome and suitable for viewing by minors. Winterfest, Inc. Reserves the right to prevent any boat from participating in the parade that displays obscene decorations, nudity or profanity.

By entering your boat and captaining in the parade, you hereby acknowledges and consents to be bound by the above terms and conditions.

If you have any questions regarding this application, please feel free to contact the Winterfest office (954) 767-0686 or email at info@winterfestparade.com. We look forward to your participation.



REMEMBER:

- ***150 Feet Spacing (2 or 3 boat lengths MAX)***
- ***Loud Music***
- ***Bright Lights***
- ***No Zig-Zagging / No Passing***
- ***No Grandstanding***
- ***Monitor Your Radio—Channel 68***





68

**CHANNEL TO
MONITOR ON DEC 16**

THANK YOU TO OUR SPONSORS FOR TONIGHT!!

 **West Marine®**



REMEMBER...DOWNLOAD THE WINTERFEST APP!